

BNS New Building Orientation

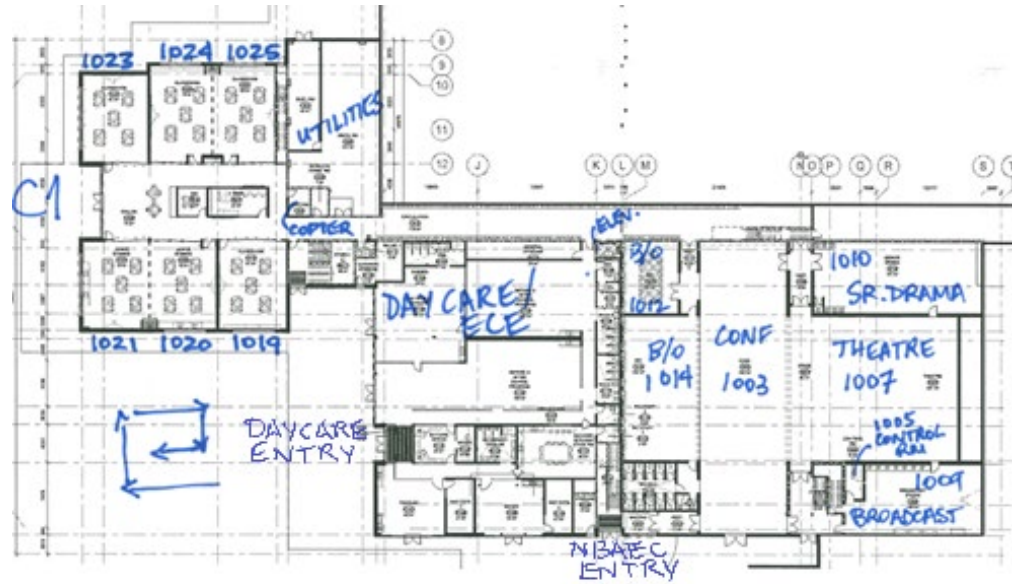
General Notes

The descriptions below are based on the floorplans pictured. Changes made during construction that may have altered some features.

- Room numbers are all 4-digits and begin with the number of the floor the room is on. E.g. 2064 is on the 2nd floor.
- Lowest Room Numbers are at the North end of the Building and increase as they move South.
- The classrooms are arranged in Pods in three locations of the building:
 - A Pods are in the Northwest corner of the building and include rooms in the 2000s, 3000s, and 4000s.
 - B Pods are in the North end of the building (between Pod A and the Office block) and include rooms in the 2000s, 3000s, and 4000s.
 - C Pods are in the South end of the building and include rooms in the 1000s, 2000s, and 3000s.
- Each floor of every classroom pod includes
 - several classrooms (usually 6, usually including a specialized room like a Computer Lab or Science Room)
 - a Teacher Office (shared by all the teachers who work in that Pod)
 - a communal Collaboration Space (between the classrooms) with work desk and flexible seating
 - an enclosed Breakout Room
 - a shared kitchenette (with sink & microwave)
- There are stairwells accessing three floors in three areas:
 - Next to A Pods (for floors 2, 3, 4, roof)
 - Next to B Pods (for floors, 2, 3, 4)
 - Next to C Pods (for floors 1, 2, 3)
- There are also single-story stairs...
 - In the Atrium from the main entrance (ground level) to the 3rd floor (1 floor up)
 - in the north↔south hallway linking floors 1 & 2
- There are emergency stairs...
 - from C2/C3 to outside
 - from the 3rd floor hallway between A pods and B pods to outside
- There are two elevators
 - North, located adjacent to the Main Office servicing floors 2, 3, 4
 - South, located in the main hallway adjacent to the Adult Ed. Wing, servicing floors 1, 2, 3. This elevator is two-sided and shared with Adult Ed to give them access to their spaces on floors 2 & 3.
- There are two changerooms (gendered) for PE/Athletics located in the hallway that accesses both gyms.
- There are washrooms located throughout the building.
 - Some are for staff only.
 - Some are single-room facilities, many of which are fully-accessible.
 - Some are multi-stall washrooms that are either gendered or universal (the gendered washrooms also have full-height doors and include fully-accessible options).

First floor (rooms 1000-1031)—Spaces described from the south entrance, moving north into the building

- Located at the south end of the building only. Entrance closest to Curtis Avenue.
- Main Entrance for North Burnaby Adult Education Centre (NBAEC)
- Main Entrance and facilities for the Early Childhood Education (ECE) Centre Daycare & Before/After School Care programs
 - Various offices & learning spaces
 - 6 washroom facilities (single-room and multi-stall)
- Classroom Pod C1
 - Various departments including Junior Science rooms
 - Indigenous Learning Centre
 - Communal Collaboration Space
 - Shared Breakout Room
- Copy Room
- Washroom (single-room; fully-accessible) for secondary school.
- Breakout/Conference room
- Elevator (south)
- Main entrance to Drama Room



Second floor (rooms 2000-2130)—Spaces described from the Main entrance, moving west into the building, then south

- This floor spans the entire building
- Main Entrance to school (east)
- Atrium & Main Mall
- Main Office & Staff Room
- Access Program (also connects to pod B2)
- Main stairs/seating to 3rd floor
- Elevator (north)
- Foods & Textiles rooms
- Food Service Servery (Cafeteria kitchen)
- School Store
- Main Theatre Access & Media Arts entrance
- Book Storage
- Custodial & Utility Rooms
- Main Washrooms (multi-stall with fully-accessible option, gendered)
- Classroom Pod B2 (ground floor)
 - Various departments (including Biology/Physics classrooms & Access Program)
 - Communal Collaboration Space
 - Shared Breakout Room
 - Outdoor access
- Classroom Pod A2 (ground floor)
 - Various departments (including Biology/Physics classrooms)
 - Communal Collaboration Space
 - Shared Breakout Room
 - Outdoor access
 - Adjacent to stairs
- Gym Washrooms (multi-stall with fully-accessible option, universal)
- Gym Changerooms (gendered)
- Gyms & Weight Room
- Music Rooms
- Art Rooms
- Shops (Wood, Auto, Drafting, Tech/Robotics)
- Staff washroom (single-room, fully-accessible) & Staff shower room
- Elevator (south, shared with Adult Ed.)
- Adult Ed. (Offices, learning spaces, stairs, washroom facilities)
- Dance/Fitness Studio
- Classroom Pod C2
 - Various departments (including Computer Labs)
 - Communal Collaboration Space
 - Shared Breakout Room
 - Adjacent to stairs



Third Floor (rooms 3000-3085)—Spaces described from the Main entrance, moving west into the building, then south

- Exploration Lab/Textiles & Deck
- Library with Work Rooms & Study Nooks
- Elevator (north)
- LSS Learning Centre
- Career Programs Office
- Counselling Centre
- Classroom Pod B3
 - Various departments (including Chemistry classrooms)
 - Science/Chemistry storage
 - Communal Collaboration Space
 - Shared Breakout Room
 - Washroom (multi-stall with fully-accessible option, universal)
 - Mini-Lounge
- Book Storage (English & Music)
- Classroom Pod A3
 - Various departments (including Biology/Physics classrooms)
 - Communal Collaboration Space
 - Shared Breakout Room
 - Deck access
 - Adjacent to stairs
- Mechanical & Storage rooms
- Mezzanine access to shops (Auto, Wood)
 - Elevator (south)
 - Washroom (single-room, fully-accessible)
 - Classroom Pod C3
 - Various departments (including Computer Labs)
 - Communal Collaboration Space
 - Shared Breakout Room
 - Deck access
 - Adjacent to stairs



Fourth Floor (rooms 4000-4024)—Accessed via stairs (east & west) or elevator (north) only. Spaces described from east stairs heading west.

- Lounge
- Washroom (single-room, fully accessible)
- Washrooms (single-room, not accessible x2)
- Classroom pod B4
 - Various departments (including Chemistry room)
 - Communal Collaboration Space
 - Shared Breakout Room
 - Deck access
- Breakout Alcove
- Classroom pod A4
 - Various departments (including Biology/Physics rooms)
 - Communal Collaboration Space
 - Shared Breakout Room
 - Adjacent to stairs

